

Oirase Mountain Stream, Aomori



Kyoto



Biei, Hokkaido



# JAPAN

## Welcome Guide for Muslim Visitors



Dotonbori, Osaka



Shirakawa-go, Gifu

Matsumoto  
Castle,  
Nagano



Japan. Endless Discovery.

JNTO

Japan National Tourism Organization

<http://www.jnto.org.my>



<https://www.facebook.com/Visit.My.Japan/>



More information:

<http://muslimguide.jnto.go.jp/eng/>

Plenty of information for enjoying Japan



# Welcome Guide for Muslim Visitors to JAPAN

Unforgettable experiences you can only have in Japan.  
Helping our Muslim visitors have an enjoyable trip.



## Contents

Introduction.....	02-03
The Unique Appeal of Traveling in Japan .....	04-05
Japan's Main Tourist Spots.....	06-07
Hokkaido/Tohoku Area Information....	08-11
Kanto Area Information.....	12-13
Tokyo Area Information.....	14-17
Shoryudo Area Information.....	18-21 (Dragon-rise Region)
Kansai Area Information.....	22-25
Chugoku/Shikoku Area Information....	26-27
Kyushu/Okinawa Area Information....	28-29
Basic Information.....	30
Communication Sheet.....	31

## President's Message

Thank you for looking at this Welcome Guide for Muslim Visitors.



We are implementing a range of measures to make sure that Muslim visitors enjoy a safe and comfortable stay wherever they are in Japan. This pamphlet contains information on restaurants, spaces for Muslim visitors to pray, hotels and other matters. We hope it will be helpful when you are visiting our country.

Japan offers considerable appeal for the traveler, including the beauty of its distinct seasons, traditional streetscapes, modern cities, delicious cuisine, and excellent shopping. We eagerly await your visit to Japan.

*R. Matsuyama*

Ryoichi Matsuyama  
President

Japan National Tourism Organization



# Experience the thrill of an encounter with the delicate and gracious Japanese spirit.

Come to Japan and experience the richness of its unique culture with a long and fascinating history.

## Tradition



In addition to traditional living skills and contemporary innovation, encounter unique Japanese craftsmanship which emphasises on the minutest detail.

## Creativity



## Hospitality

Enjoy Japan's traditional festivals and events, relish the convenience, cleanliness, and safety of life in Japan, and experience the *omotenashi* (hospitality) of the Japanese people.

## Japanese Food



World heritage *Washoku* (Japanese food) values the special tastes derived from seasonable plants and seafood ingredients, allowing you to enjoy the delicious tastes of the four seasons.







P.18 ▶

Mt. Fuji, Shizuoka (Shoryudo(Dragon-rise Region))



P.22 ▶

Kiyomizu-dera Temple, Kyoto (Kansai)



P.28 ▶

Hakata Gion Yamakasa Festival, Fukuoka (Kyushu)



P.28 ▶

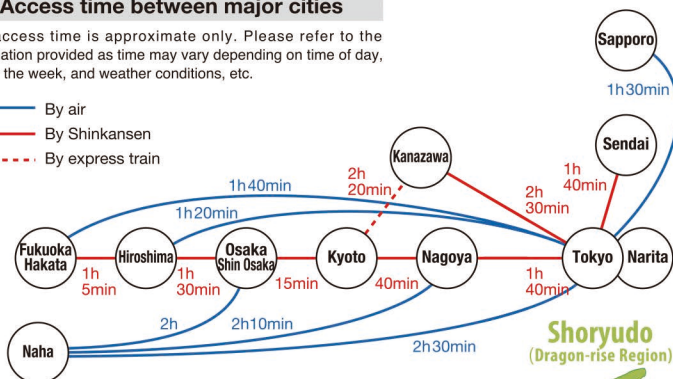
The Ocean Expo Park (Okinawa)

A memorable trip just for you.  
Experience historical and cultural places as well as some of Japan's newest and hottest tourist spots.

#### Access time between major cities

The access time is approximate only. Please refer to the information provided as time may vary depending on time of day, day of the week, and weather conditions, etc.

- By air
- By Shinkansen
- - - By express train



P.08 ▶

RUSUTSU RESORT (Hokkaido)



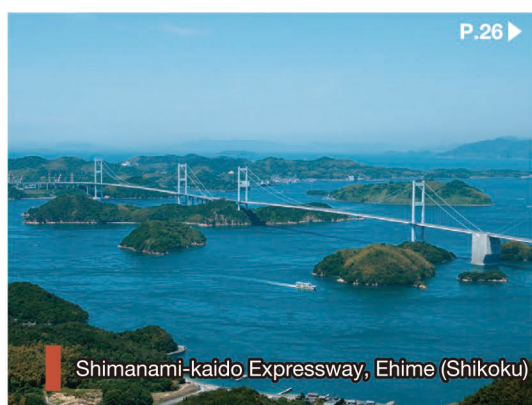
P.08 ▶

Oirase Mountain Stream, Aomori (Tohoku)



P.12 ▶

Yokohama, Kanagawa (Kanto)



P.26 ▶

Shimanami-kaido Expressway, Ehime (Shikoku)



P.26 ▶

Itsukushima-jinja Shrine, Hiroshima (Chugoku)



P.14 ▶

Senso-ji Temple, Asakusa (Tokyo)



# Hokkaido/Tohoku

Located in the north of Japan,  
this is a diverse region of snowy  
winter scenery and summer festivals!



## Restaurants

### JAPANESE / WESTERN

#### A Restaurant VEROCITY

Hotel Live Max Sapporo B1F,  
3-1-26, Minami9-jo Nishi,  
Chuo Ward, Sapporo City,  
Hokkaido

☎+81-11-522-2773

☑Breakfast only:  
Mon.-Sat. 7:00-9:00 (L.O.),  
Sun., Hol. 7:00-9:30 (L.O.)

☑Open every day  
www.hotel-livemax.com/  
hokkaido/sapporo/



### MALAYSIAN / INDONESIAN

#### A warung-jawa

Zeus Bldg., B1F,  
3-1-15, Kita14-jo Nishi,  
Kita Ward, Sapporo City,  
Hokkaido

☎+81-11-708-6880

☑12:00-21:30

☑Sun.

www.halal-shop.net



### INDIAN

#### A SPICE

5-1-8, Kita18-jo Nishi, Kita Ward,  
Sapporo City, Hokkaido ☎+81-11-374-8374

☑Lunch: 11:00-15:00, Dinner: 17:00-23:00

☑None scheduled

http://sapporospace.sakura.ne.jp



### JAPANESE

#### A Ramen Houryu

3, Minami6-jo Nishi, Chuo Ward,  
Sapporo City, Hokkaido ☎+81-11-511-0403

☑Mon.-Sat. 10:30-3:00,

Sun. & Hol. 10:30-2:00

☑Open every day

www.houryu.co.jp



### INDIAN

#### A INDIAN RESTAURANT KRISHNA SAPPORO

Shin Odori Bldg., B2F, 4-1, Odorinishi, Chuo Ward,  
Sapporo City, Hokkaido ☎+81-11-272-0277

☑11:00-22:00 ☑None scheduled

http://denshobato.com/  
tokusen/kurishuna/top.tks



..... Owner or chef  
is Muslim



..... Non-pork and non-pork  
related menu is available



..... Vegetarian or seafood  
menu is available.



..... No Alcohol Used.



..... Alcohol drinks  
are not served.



..... Space or items for  
prayer are available.

☎ Tel.No.

☑ Open ☑ Closed

📍 Link to Google Maps

\*These are original icons for this guide. \*The information included in this guide is based on information supplied by each restaurant, hotel, shop and facility. For further details, please approach them directly. \*The services indicated by the icons may not always be available at all times. When planning to use those services, please make advance reservations and confirm whether that service is available.

### INDIAN

#### A Taj Mahal Sapporo Factory

Kita 3-jokan  
Bldg., B1F, 4, Kita2-jo Higashi,  
Chuo Ward, Sapporo City,  
Hokkaido

☎+81-11-207-0765

☑11:00-21:30

☑Open every day

www.tajmahalgroup.com



### INDIAN

#### A INDIAN FOOD DINING JYOTI

2F, 4-4, Minami2-jo Nishi,  
Chuo Ward, Sapporo City,  
Hokkaido

☎+81-11-233-3999

☑11:30-23:00

☑End-of-year and  
New Year holidays

http://jyoti.sub.jp



### INDIAN

#### A Spice Dining Chandama

Ryokuen Bldg., B1F,  
7-1-1, Kita3-jo Nishi, Chuo Ward,  
Sapporo City, Hokkaido

☎+81-11-577-9487

☑11:30-22:00

☑End-of-year and  
New Year holidays

www.facebook.com/  
SpiceDiningChandama



### INDIAN

#### A INDIAN CURRY MIRCH

20-1-16, Minami5-jo Nishi,  
Chuo Ward, Sapporo City,  
Hokkaido

☎+81-11-551-6761

☑11:30-22:00

☑Mon., Tue.

(Except National holiday)

www.mirch.biz/english/



### JAPANESE / WESTERN / MULTINATIONAL / CAFE

#### C Sheraton Hokkaido Kiroo Resort

650, Tokiwa, Akaigawa-mura,  
Yoichi-gun, Hokkaido

☎+81-135-34-7111

☑Open every day

www.sheratonhokkaidokiroo.  
co.jp/en



### JAPANESE / WESTERN / CAFE

#### D An Dining

Ki Niseko, 183-43, Yamada,  
Kutchan Town, Abuta-gun,  
Hokkaido

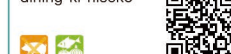
☎+81-136-21-2565

☑7:00-10:00, 11:00-15:00,

17:30-21:30 \*Vary by season

☑Open every day

www.kiniseko.com/  
dining-ki-niseko



### JAPANESE

#### ① NARITAYA SENDAI

June Palace 101, 2-29,  
Showamachi, Aoba Ward,  
Sendai City, Miyagi

☎+81-22-274-4080

☑11:00-23:00

☑None scheduled

www.naritaya.jp



### JAPANESE / WESTERN / CAFE

#### ① Restaurant Quore

Hotel Metropolitan Akita, 7-2-1,  
Naka-dori, Akita City, Akita

☎+81-18-831-2222

☑7:30-9:30, 11:00-14:00,

17:00-21:00

☑Open every day

www.metro-akita.jp/  
restaurant\_list/quore/



\*The information is valid as of December 2016.

\*As information may change, please check to ensure the information you rely on is up to date.

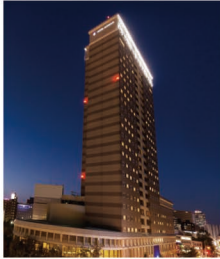
\*Please confirm holidays and business hours by contacting the respective restaurant, hotel, shop and facility yourself.

\*Advance reservation is recommended.



### A HOTEL MYSTAYS PREMIER Sapporo Park

2-2-10, Minami9-jo Nishi,  
Chuo Ward, Sapporo City,  
Hokkaido  
☎+81-11-512-3456  
www.mystays.com/  
en/hotel/hokkaido/  
mystays-premier-sapporo-park/



### A New Otani Inn Sapporo

1-1-1, Kita2-jo Nishi,  
Chuo Ward, Sapporo City,  
Hokkaido  
☎+81-11-222-1111  
http://newotaniinn.sapporo.com



### F RUSUTSU RESORT Hotel & Convention

13, Izumikawa, Rusutsu-mura,  
Abuta-gun, Hokkaido  
☎+81-136-46-3111  
http://rusutsu.co.jp



### Hotel Metropolitan Sendai

1-1-1, Chuo, Aoba Ward,  
Sendai City, Miyagi  
☎+81-22-268-2525  
www.sendaimetropolitan.jp



### A Jozankei Tsuruga Resort Spa MORI NO UTA

3-192, Jozankeionsenhighashi,  
Minami Ward, Sapporo City,  
Hokkaido  
☎+81-11-598-2671  
www.morino-uta.com/en/



### E Hotel Mount Racey

2-4, Suehiro, Yubari City,  
Hokkaido  
☎+81-123-52-3456  
www.yubari-resort.com/en/



### I TOKACHI SAHORO RESORT HOTEL

Karikachi-Kogen,  
Shintoku Town,  
Kamikawa-gun, Hokkaido  
☎+81-156-64-7111  
www.sahoro.co.jp



### K HOTEL Jogakura

Hakkodasanchu, Arakawa,  
Aomori City, Aomori  
☎+81-17-738-0658  
www.jogakura.com/english.html



Owner or chef is Muslim



Non-pork and non-pork related menu is available



Vegetarian or seafood menu is available



No Alcohol Used.



Alcohol drinks are not served.



Space or items for prayer are available.

Tel.No.

Open Closed

Link to Google Maps

\*These are original icons for this guide. \*The information included in this guide is based on information supplied by each restaurant, hotel, shop and facility. For further details, please approach them directly. \*The services indicated by the icons may not always be available at all times. When planning to use those services, please make advance reservations and confirm whether that service is available.

### Hotel Metropolitan Akita

7-2-1, Naka-dori,  
Akita City, Akita  
☎+81-18-831-2222  
www.metro-akita.jp



### Meiwa Sunpia

4627-1, Akatsuka, Nishi Ward,  
Niigata City, Niigata  
☎+81-25-239-3322  
http://meiwasunpia.com



## Prayer room

### A SAPPORO FACTORY

4, Kita2-jo Higashi, Chuo Ward,  
Sapporo City, Hokkaido  
☎+81-11-207-5000  
Shops: 10:00-20:00,  
Restaurants: 11:00-22:00  
Dec. 31  
http://sapporofactory.jp/  
foreign/english/



### B CHITOSE OUTLETMALL RERA

1-2-1, Kashiwada Minami,  
Chitose City, Hokkaido  
☎+81-123-42-3000  
Shops: 10:00-19:00  
Open every day  
www.outlet-rera.com/english/



### B New Chitose Airport

Bibi, Chitose City, Hokkaido  
☎+81-123-23-0111  
[Prayer room location]  
2F of International Terminal Bldg.  
www.new-chitose-airport.jp/en/



### H MITSUI OUTLET PARK SAPPORO KITAHIROSHIMA

3-7-6, Omagariwai-cho,  
Kitahiroshima City, Hokkaido  
☎+81-11-377-3200  
Shops: 10:00-20:00,  
Restaurants: 11:00-21:00,  
Food court: 10:30-21:00  
\*Vary by shop  
None scheduled  
www.31op.com/  
sapporo/english/



## Mosques

### A Sapporo Masjid

3-1-10, Kita14-jo Nishi,  
Kita Ward, Sapporo City,  
Hokkaido  
☎+81-11-709-5008  
www.sapporomasjid.com



### G Masjid Al-Noor

5-4-27, Inaho,  
Otaru City, Hokkaido  
☎+81-134-26-6488  
www.noormasjid.com



### J Sendai Mosque

7-7-24, Hachiman,  
Aoba Ward, Sendai City,  
Miyagi  
☎+81-22-226-2625  
http://iccsendai.org/web/en/





# Kanto

Adjacent to Tokyo, the Kanto region includes a feast of places to visit, including the World Heritage site Nikko and the traditional resort of Hakone.

H Nikko-toshogu Shrine, Tochigi

B Hakone, Kanagawa

I Fukuroda Falls, Ibaraki

- A Yokohama
- B Hakone
- C Ebina
- D Saitama
- E Narita
- F Ichikawa
- G Chiba
- H Nikko
- I Fukuroda Falls

## Restaurants

### ARABIAN

#### A Arabic Restaurant AL AIN

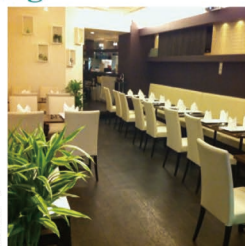
Stork Tower Bldg., B1F,  
2-17, Yayoi-cho, Naka Ward,  
Yokohama City, Kanagawa  
☎+81-45-251-6199  
☑Tue. -Sat. 17:30-23:00,  
Sun., Hol. 17:30-22:30  
☑Mon.  
\*Otherwise noticed irregular  
www.alaindining.com/  
index\_eng.html



### INDIAN

#### A DELHI Dining

Kannai JS Bldg., 1F, 207,  
Yamashita-cho, Naka Ward,  
Yokohama City, Kanagawa  
☎+81-45-633-9393  
☑Lunch: 11:30-15:00,  
Dinner: 17:30-22:00  
☑Mon. & New Year holidays  
https://ja-jp.facebook.com/  
DELHI.Dining



### MULTINATIONAL / CAFE

#### A Port Terrace Cafe

JICA Yokohama 3F,  
2-3-1, Shinko, Naka Ward,  
Yokohama City, Kanagawa  
☎+81-45-641-1498  
☑11:30-14:00, 17:30-21:00,  
\*Tea Time: 14:00-17:00  
(Sat., Sun., & Hol. only)  
☑None scheduled  
www.jica.go.jp/yokohama



### JAPANESE

#### D Kappou YAMA

Sainokuni Saitama Arts Theater,  
3-15-1, Uemine, Chuo Ward,  
Saitama City, Saitama  
☎+81-48-854-1170  
☑19:00-21:00  
(by reservation only)  
☑Mon.  
http://kappou-yama.jp



Owner or chef is Muslim



Non-pork and non-pork related menu is available



Vegetarian or seafood menu is available.



No Alcohol Used.



Alcohol drinks are not served.



Space or items for prayer are available.

Tel.No.

☑Open ☑Closed

📍Link to Google Maps

\*These are original icons for this guide. \*The information included in this guide is based on information supplied by each restaurant, hotel, shop and facility. For further details, please approach them directly. \*The services indicated by the icons may not always be available at all times. When planning to use those services, please make advance reservations and confirm whether that service is available.

## Hotels

### A WASHINGTON HOTEL YOKOHAMA ISEZAKICHO

5-53, Chojamachi, Naka Ward,  
Yokohama City, Kanagawa  
☎+81-45-243-7111  
http://yokohama-i.washington-hotels.jp



### A WASHINGTON HOTEL YOKOHAMA SAKURAGICHO

1-101-1, Sakuragi-cho,  
Naka Ward, Yokohama City,  
Kanagawa  
☎+81-45-683-3111  
http://yokohama-s.washington-hotels.jp



### E MARROAD INTERNATIONAL HOTEL NARITA

763-1, Komaino,  
Narita City, Chiba  
☎+81-476-30-2222  
www.marroad.jp/narita/  
index.htm



### G Hotel Springs MAKUHARI

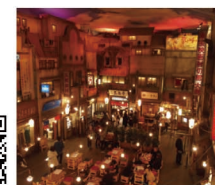
1-11, Hibino, Mihama Ward,  
Chiba City, Chiba  
☎+81-43-296-3111  
http://springs.co.jp/english/



## Prayer room

### A Shin-Yokohama Raumen Museum

2-14-21, Shinyokohama,  
Kohoku Ward, Yokohama City,  
Kanagawa  
☎+81-45-471-0503  
☑11:00-22:00  
☑Open every day  
www.raumen.co.jp/  
english/



### E Narita International Airport

Narita International Airport,  
Narita City, Chiba  
☎+81-476-34-8000  
[Prayer room location]  
5F before Passport control,  
Terminal 1  
2F after Passport control, Terminal 1  
1F Main Bldg., before Passport control, Terminal 2  
1F Main Bldg., after Passport control, Terminal 2  
2F before Passport control, Terminal 3  
3F after Passport control, Terminal 3  
www.narita-airport.jp/en/



## Mosques

### A Ja'me Masjid, Yokohama

1-31-13, Hayabuchi,  
Tsuzuki Ward,  
Yokohama City, Kanagawa  
☎+81-90-3132-7881  
www.masjid-yokohama.jp



### C Ebina Mosque

3-12-1, Kamigo,  
Ebina City, Kanagawa  
☎+81-46-205-2121



### F Hira Masjid

3-3-19, Gyotoku Ekimae,  
Ichikawa City, Chiba  
☎+81-473-95-8449  
www.icoj.org/hira-masjid.html



\*The information is valid as of December 2016.

\*As information may change, please check to ensure the information you rely on is up to date.

\*Please confirm holidays and business hours by contacting the respective restaurant, hotel, shop and facility yourself.

\*Advance reservation is recommended.



# Tokyo

Japan's capital is full of interest, with the latest culture, tourist spots, world-class gourmet and shopping opportunities, and a downtown area where tradition lives on.



## Restaurants

### JAPANESE

#### A HANASAKAJI-SAN Sakuragaoka

Sakuraya Bldg., B1F,  
3-22, Sakuragaoka-cho,  
Shibuya City, Tokyo  
☎+81-3-3496-7777  
☑ Lunch:  
Mon.-Fri. 11:30-15:00,  
Dinner: 17:00-24:00  
☑ Open every day  
www.hanasakaji-san.jp



### WESTERN / CAFE

#### C Thrush Café

HAPPO-EN,  
1-1-1, Shirokanedai,  
Minato City, Tokyo  
☎+81-3-3443-3105  
☑ Mon.-Fri. 10:00-22:00,  
Sat., Sun. & Hol. 8:00-22:00  
☑ End-of-year and  
New Year holidays  
www.happo-en.com/  
restaurant/thrushcafe/



### WESTERN / MULTINATIONAL / CAFE

#### B Sakura Cafe Hatagaya

1-32-3, Hatagaya,  
Shibuya City, Tokyo  
☎+81-3-3469-5211  
☑ 24 hours a day  
☑ Open every day  
www.sakura-cafe.asia/  
hatagaya/english/



### MALAYSIAN / MULTINATIONAL

#### D MALAYSIA ETHNIC RESTAURANT MALAYCHAN satu

3-22-6, Nishiikebukuro,  
Toshima City, Tokyo  
☎+81-3-5391-7638  
☑ Lunch:  
Tue.-Sat. 11:00-14:30,  
Dinner:  
Mon.-Sat. 17:00-22:30  
\*Sun. 11:00-22:30  
☑ Open every day  
www.malaychan-satu.jp



Owner or chef  
is Muslim



Non-pork and non-pork  
related menu is available



Vegetarian or seafood  
menu is available.



No Alcohol Used.



Alcohol drinks  
are not served.



Space or items for  
prayer are available.

Tel.No.

☑ Open ☑ Closed

📍 Link to Google Maps

\*These are original icons for this guide. \*The information included in this guide is based on information supplied by each restaurant, hotel, shop and facility. For further details, please approach them directly. \*The services indicated by the icons may not always be available at all times. When planning to use those services, please make advance reservations and confirm whether that service is available.

### JAPANESE

#### D Minokichi Tobu Ikebukuro

TOBU Department Store  
Ikebukuro Restaurants Spice 15F,  
1-1-25, Nishiikebukuro,  
Toshima City, Tokyo  
☎+81-3-3980-8855  
☑ Mon.-Sat. 11:00-23:00,  
Sun & Hol. 11:00-22:00  
☑ None scheduled  
www.japanese-  
kyoto-cuisine.com



### INDIAN

#### E Annam

Ginza Five Star Bldg., 4F,  
5-8-13, Ginza, Chuo City,  
Tokyo  
☎+81-3-3571-1835  
☑ 11:00-15:00, 17:00-23:00  
☑ Open every day  
http://annam.co.jp/index.  
php/en/home



### TURKISH

#### F BOSPHORUS HASAN Shinjuku

Daiichi Tamaya Bldg., 2F,  
3-6-11, Shinjuku,  
Shinjuku City, Tokyo  
☎+81-3-3354-7947  
☑ 11:30-14:30, 17:00-23:30  
☑ Open every day  
http://bosphorushasan.com



### ARABIAN / OTHERS

#### F Hannibal

Union Bldg., 1F,  
1-19-2, Hyakunin-cho,  
Shinjuku City, Tokyo  
☎+81-3-6304-0930  
☑ 17:00-24:00  
☑ Open every day  
http://hannibal.jp/top



### OTHERS

#### G Le Maghreb Chandelier

1F, 1-12-5, Nishiazabu,  
Minato City, Tokyo  
☎+81-3-3478-1270  
☑ Tue.-Fri. 11:30-15:00, 17:30-23:30  
Sat. 11:30-24:00, Sun. 11:30-23:00  
☑ Mon.  
http://lemaghrebchandelier.com



### ARABIAN / OTHERS

#### G Nefertiti Tokyo

3-1-20 Nishiazabu,  
Minato City, Tokyo  
☎+81-3-6844-8208  
☑ Lunch: 11:30-15:00  
(reservation-only),  
Dinner: 15:00-1:00  
(Fri.-Sat.: until 3:00)  
☑ None scheduled  
www.  
nefertititokyo.com



### ARABIAN / OTHERS

#### G Restaurant Aladdin

Roppongi Yasuda Bldg., 2F,  
3-2-6, Nishi-azabu,  
Minato City, Tokyo  
☎+81-3-3401-8851  
☑ Mon.-Sat.  
11:30-14:30, 17:00-22:00,  
Sun. 17:00-22:00  
☑ Open every day  
www.  
persia-aladdin.com



### WESTERN / CAFE

#### H Tokyo bay restaurant & Party cruise SYMPHONY

2-7-104, Kaigan, Minato City, Tokyo  
☎+81-3-3798-8101  
☑ 11:50-14:00, 15:00-15:50,  
16:20-18:20, 19:00-21:30  
(by reservation only)  
☑ None scheduled  
www.symphony-cruise.  
co.jp/english/



\*The information is valid as of December 2016.

\*As information may change, please check to ensure the information you rely on is up to date.

\*Please confirm holidays and business hours by contacting the respective restaurant, hotel, shop and facility yourself.

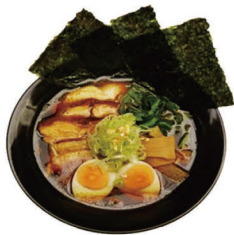
\*Advance reservation is recommended.



## JAPANESE

## ① NARITAYA ASAKUSA

Nishisando Shotengai,  
2-7-13, Asakusa,  
Taito City, Tokyo  
☎+81-3-4285-9806  
🕒11:00-22:00  
(Sun.: until 21:00)  
📌Open every day  
www.naritaya.jp



## TURKISH

## ① The Kebab Factory

Daiichiya Bldg., 1F & B1F,  
1-1-12, Asakusa,  
Taito City, Tokyo  
☎+81-3-6802-7302  
🕒11:00-22:00  
📌None scheduled  
www.the-kebab-factory.com



## JAPANESE

## ① ASAKUSA SUSHI-KEN

2-11-4, Asakusa,  
Taito City, Tokyo  
☎+81-3-5246-6547  
🕒Mon.-Sat.  
12:00-14:00, 17:00-24:00,  
Sun., Hol.  
11:30-15:00, 17:00-22:00  
📌Open every day  
http://asakusa2-sushiken.com



## JAPANESE / INDONESIAN / CAFE

## ① SEKAI CAFE Asakusa

1-18-8, Asakusa,  
Taito City, Tokyo  
☎+81-3-6802-7300  
🕒9:00-18:00  
📌None scheduled  
http://sekai-cafe.com/  
asakusa/

Owner or chef  
is MuslimNon-pork and non-pork  
related menu is availableVegetarian or seafood  
menu is available

No Alcohol Used.

Alcohol drinks  
are not served.Space or items for  
prayer are available.

Tel.No.

📞 Open 📞 Closed

📍 Link to Google Maps

\*These are original icons for this guide. \*The information included in this guide is based on information supplied by each restaurant, hotel, shop and facility. For further details, please approach them directly. \*The services indicated by the icons may not always be available at all times. When planning to use those services, please make advance reservations and confirm whether that service is available.

## Prayer room

## Mosques

## F TAKASHIMAYA SHINJUKU STORE

5-24-2, Sendagaya, Shibuya City, Tokyo  
☎+81-3-5361-1111  
🕒10:00-20:00 (Fri., Sat.: until 20:30)  
📌Jan. 1  
www.takashimaya.co.jp/  
shinjuku/store\_information/



## J Tokyo International Airport (Haneda Airport)

2-6-5, Haneda-kuko,  
Ota City, Tokyo  
☎+81-3-6428-0888  
[Prayer room location]  
3F Departure Lobby  
www.haneda-airport.  
jp/inter/en/



## A Tokyo Camii

1-19, Oyama-cho, Shibuya City, Tokyo  
☎+81-3-5790-0760 www.tokyocamii.org



## D Otsuka Mosque

3-42-7, Minami Otsuka, Toshima City, Tokyo  
☎+81-3-3791-5631 www.islam.or.jp/masjid/



## E Asakusa Mosque

1-9-12, Higashi Asakusa, Taito City, Tokyo  
☎+81-3-3871-6061



## K Okachimachi Mosque

4-6-7, Taito, Taito City, Tokyo



## I Kamata Masjid

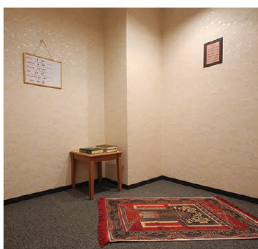
5-1-2, Kamata, Ota City, Tokyo  
www.kamatamasjid.com



## Hotels

## B Sakura Hotel Hatagaya

1-32-3, Hatagaya,  
Shibuya City, Tokyo  
☎+81-3-3469-5211  
www.sakura-  
hotel.co.jp/hatagaya



## C Sheraton Miyako Hotel Tokyo

1-1-50, Shirokanedai,  
Minato City, Tokyo  
☎+81-3-3447-3111  
www.miyakohotels.ne.jp/  
tokyo/english/



## F Shinjuku Prince Hotel

1-30-1, Kabuki-cho,  
Shinjuku City, Tokyo  
☎+81-3-3205-1111  
www.princehotels.com/shinjuku/



## I AGORA PLACE ASAKUSA

2-2-9, Kotobuki, Taito City, Tokyo  
☎+81-3-3842-8421  
www.agoraplace-asakusa.com/  
language/en/

Voice  
of Muslim  
in Japan

## Spots to Visit in Tokyo

## Asakusa

Enjoy some shopping or strolling in the grounds of Senso-ji Temple, and around Nakamise and Kaminarimon Gate. Nakamise, with its row of stores selling small Japanese-style items and traditional sweets unchanged in centuries, is perfect for souvenir-hunting. Azumabashi Bridge is a popular spot for photographing the Tokyo Skytree®

## Ginza

Ginza is the shopping street that best represents Tokyo. Ranged side by side are luxury brand shops, department stores, and high-profile stores selling the very latest fashions. Enjoy shopping here all day long.

## Harajuku

Stroll along Takeshita-dori and take in the interesting fashions, such as outfits inspired by favourite fictional characters or people dressed in hip-hop style. A big drawcard is the reasonably priced shopping, including ¥100 stores and cute sundry items and shoes.

## Odaiba

Take souvenir photos against the backdrop of the Rainbow Bridge, Tokyo's Statue of Liberty, Tokyo Tower, and other landmarks and enjoy gourmet dining and shopping in some of Japan's biggest entertainment and shopping malls.

## Tokyo Camii

Here is one of Japan's largest mosques built in the beautiful Turkish Ottoman era style. A popular spot for Muslim visitors to Japan.

## Halal Shops in Tokyo

Japan's halal shops offer halal-certified vacuum-packed foods, instant ramen noodles, and sweets. Any problems with food while you are travelling will be solved by a visit to a halal shop.

In front of Shin-Okubo Station on the JR Yamanote Line are a number of halal shops.

The Ameya-yokocho street market in Ueno where people hunt for bargains also has halal shops. With its various spices, condiments, and halal meats, this market is convenient for all your shopping needs.

\*Please confirm holidays and business hours by contacting the respective restaurant, hotel, shop and facility yourself.

\*Advance reservation is recommended.



# Shoryudo (Dragon-rise Region)

The Shoryudo (Dragon-rise Region) of central Japan features a host of natural and historical sights and plenty of gourmet treats sourced from the sea and mountains.



## Restaurants

### JAPANESE

#### A Restaurant Tateyama

Hotel Tateyama, Murodo, Ashikuraji, Tateyama Town, Nakanikawa-gun, Toyama (Tateyama Kurobe Alpine Route)  
☎ +81-76-463-3345  
🕒 10:00-13:30 (L.O.)  
\*Opening Period:  
Apr. 16- Nov. 30  
<http://h-tateyama.alpen-route.co.jp/english/>



### INDIAN

#### C Indian Restaurant Rubinaa by the bay

7-120, Onebu, Uchinada Town, Kahoku-gun, Ishikawa  
☎ +81-76-286-6328  
🕒 Mon.-Fri. 11:30-15:00, 17:30-22:00, Sat., Sun. & Hol. 11:30-22:00  
🍽️ Thu.  
[www.rubinaabythebay.com](http://www.rubinaabythebay.com)



### JAPANESE / CAFE

#### F ENZA Cafe

1421-1, Kanbayashi, Hirao, Yamanouchi Town, Shimotakai-gun, Nagano  
☎ +81-269-38-1736 🕒 10:00-17:00  
🍽️ None scheduled  
[www.facebook.com/enzacafe](http://www.facebook.com/enzacafe)



### JAPANESE

#### P YONTORI

1-15, Higashitogawa-cho, Ogaki City, Gifu  
☎ +81-584-78-2843  
🕒 11:30-14:00 (L.O.), 17:00-20:00 (L.O.)  
🍽️ None scheduled  
[www.yontori.com](http://www.yontori.com)



### JAPANESE / WESTERN

#### H Hatoba Kitchen

S-Pulse Dream Plaza, 1F, 13-15, Irifune-cho, Shimizu Ward, Shizuoka City, Shizuoka  
☎ +81-54-354-3370  
🕒 Lunch: 11:00-16:00, Dinner: 17:30-21:00  
🍽️ Open every day  
<http://hatoba-kitchen.jimdo.com>



Owner or chef is Muslim



Non-pork and non-pork related menu is available



Vegetarian or seafood menu is available.



No Alcohol Used.



Alcohol drinks are not served.



Space or items for prayer are available.

☎ Tel.No.

🗨️ Open 🗨️ Closed

📍 Link to Google Maps

\*These are original icons for this guide. \*The information included in this guide is based on information supplied by each restaurant, hotel, shop and facility. For further details, please approach them directly. \*The services indicated by the icons may not always be available at all times. When planning to use those services, please make advance reservations and confirm whether that service is available.

### JAPANESE

#### R Sushi Yamashiti

3-3-10, Kanbara, Shimizu Ward, Shizuoka City, Shizuoka  
☎ +81-54-388-2339  
🕒 11:30-21:00  
🍽️ Tue.  
<http://r-gooppe.jp/yamashiti>



### JAPANESE / WESTERN

#### I GYOKURO-NO-SATO

1214-3, Shinfune, Okabe-cho, Fujieda City, Shizuoka  
☎ +81-54-668-0019  
🕒 11:00-14:30  
🍽️ Dec. 28-Jan. 2  
[www.city.fujieda.shizuoka.jp/soshiki/shisetsu/1445918554611.html](http://www.city.fujieda.shizuoka.jp/soshiki/shisetsu/1445918554611.html)



### JAPANESE

#### X Ama Hut HACHIMAN

819, Osatsu-cho, Toba City, Mie  
☎ +81-599-33-1023  
🕒 10:00-16:30  
🍽️ None scheduled  
<http://amakoya.com/english%20page.htm>



### MULTINATIONAL / CAFE

#### V Cheema Aunty

3-16-2, Kinugawa, Otsu City, Shiga  
☎ +81-77-573-2879  
🕒 8:00-20:00  
🍽️ None scheduled  
<http://cheema-aunty.com>



## Hotels

#### B KANAZAWA KOKUSAI HOTEL

Ru-8, Onukamachi, Kanazawa City, Ishikawa  
☎ +81-76-296-0111  
<http://kanazawakokusaihotel.co.jp>



#### E Yoshidaya Sannoukaku

13-1, Yamashiro-Onsen, Kaga City, Ishikawa  
☎ +81-761-77-1001  
[www.sannoukaku.com/lg\\_en/](http://www.sannoukaku.com/lg_en/)



#### G Hakuba Sunvalley Hotel

26030, Kamishiro, Hakuba-mura, Kitazumi-gun, Nagano  
☎ +81-261-75-3948  
[www.hakuba-sunvalleyhotel.jp](http://www.hakuba-sunvalleyhotel.jp)



#### H Nozawa Grand Hotel

8888, Toyosato, Nozawaonsen-mura, Shimotakai-gun, Nagano  
☎ +81-269-85-3151  
[www.nozawagrand.com](http://www.nozawagrand.com)



\*The information is valid as of December 2016.

\*As information may change, please check to ensure the information you rely on is up to date.

\*Please confirm holidays and business hours by contacting the respective restaurant, hotel, shop and facility yourself.

\*Advance reservation is recommended.



## Shoryudo (Dragon-rise Region)

### ① Hotel WELLIES

2350-160, Nagakura,  
Karuizawa Town,  
Kitasaku-gun, Nagano  
☎+81-267-46-1670  
www.hotelwellies.jp



### ④ Shisuien

4262-1, Azusagawayamato,  
Matsumoto City, Nagano  
☎+81-263-78-5550  
www.shisuien.jp



### ④ Minshuku KUWATANIYA

1-50-30, Sowamachi,  
Takayama City, Gifu  
☎+81-577-32-5021  
www.kuwataniya.com/english/



### ④ Hotel Resol Gifu

5-8, Nagazumi-cho,  
Gifu City, Gifu  
☎+81-58-262-9269  
www.resol-gifu.com/en/



### ④ Ogaki Forum Hotel

2-31, Mangoku,  
Ogaki City, Gifu  
☎+81-584-81-4171  
www.forumhotel.co.jp/en/



### ① Karuizawa Prince Hotel

Karuizawa, Karuizawa Town,  
Kitasaku-gun, Nagano  
☎+81-267-42-1111  
www.princehotels.com/  
karuizawa-west/



### ④ BEST WESTERN HOTEL TAKAYAMA

6-6, Hanasatomachi,  
Takayama City, Gifu  
☎+81-577-37-2000  
www.bestwestern.co.jp/  
english/takayama/



### ④ Gifu Miyako Hotel

2695-2, Nagara, Fukumitsu,  
Gifu City, Gifu  
☎+81-58-295-3100  
www.miyakohotels.ne.jp/  
gifu/english/



### ④ Shirakawa-go no yu

337, Ogimachi,  
Shirakawa-mura,  
Ono-gun, Gifu  
☎+81-5769-6-0026  
www.shirakawagou-onsen.jp/  
english.html



### ④ HOTEL QUEST SHIMIZU

3-27, Masago-cho,  
Shimizu Ward,  
Shizuoka City, Shizuoka  
☎+81-54-366-7101  
www.hotelquest.co.jp/en/



Owner or chef  
is Muslim



Non-pork and non-pork  
related menu is available



Vegetarian or seafood  
menu is available.



No Alcohol Used.



Alcohol drinks  
are not served.



Space or items for  
prayer are available.

Tel.No.

☑ Open ☑ Closed

📍 Link to Google Maps

\*These are original icons for this guide. \*The information included in this guide is based on information supplied by each restaurant, hotel, shop and facility. For further details, please approach them directly. \*The services indicated by the icons may not always be available at all times. When planning to use those services, please make advance reservations and confirm whether that service is available.

### ④ Nippondaira Hotel

1500-2, Mabase,  
Shimizu Ward,  
Shizuoka City, Shizuoka  
☎+81-54-335-1131  
www.ndhl.jp/english/



### ④ Satoyu Mukashibanashi Yuzanso

1-9-28, Ogoto,  
Otsu City, Shiga  
☎+81-77-578-1144  
www.yuzanso.co.jp



## Prayer room

### ④ Traditional Handicrafts Village YUNOKUNI NO MORI

Na-3-3, Awazu-Onsen,  
Komatsu City, Ishikawa  
☎+81-761-65-3456  
☑ 9:00-16:30 \*Vary by season  
☑ None scheduled  
http://yunokuni.jp/mori/en/



### ④ TOKI PREMIUM OUTLETS

1-2, Tokigaoka, Toki City, Gifu  
☎+81-572-53-3160  
☑ 10:00-20:00 \*Vary by season  
☑ Once a year  
(3rd Thu. of February)  
[Prayer room location]  
Please contact  
the information center.  
www.premiumoutlets.  
co.jp/en/toki/



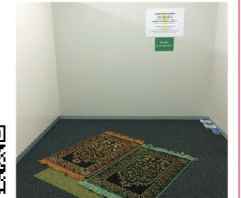
### ④ KAKEGAWA KACHOUEN

1517, Minamisaigou,  
Kakegawa City, Shizuoka  
☎+81-537-62-6363  
☑ Mon.-Fri. 10:00-16:30,  
Sat., Sun. & hol. 10:00-17:00  
☑ Open every day  
http://k-hana-tori.com/eng



### ④ Chubu Centrair International Airport

1-1, Centrair,  
Tokoname City, Aichi  
☎+81-569-38-1195  
[Prayer room location]  
Arrival lobby on 2F at  
Passenger Terminal Bldg.  
www.centrair.jp/en/



## Mosques

### ④ Masjid Bilal Nagano

6830-4, Minamiyo,  
Sakaki Town, Hanishina-gun,  
Nagano  
www.facebook.com/  
pages/Masjid-Bilal-  
Nagano-Japan/  
341625589249276



### ④ Fuji Masjid

2561-69, Nakazato,  
Fuji City, Shizuoka



### ④ Mohammadi Mosque

161-2, Terawaki-cho,  
Minami Ward Hamamatsu City,  
Shizuoka  
☎+81-53-442-5867  
www.  
hamamatsumosque.  
com



### ④ Nagoya Mosque

2-26-7, Honjin-dori,  
Nakamura Ward,  
Nagoya City, Aichi  
☎+81-52-486-2380  
http://en.  
nagoyamosque.com



\*Please confirm holidays and business hours by contacting the respective restaurant, hotel, shop and facility yourself.

\*Advance reservation is recommended.

\*The information is valid as of December 2016.

\*As information may change, please check to ensure the information you rely on is up to date.



# Kansai

Visit the ancient capital of Kyoto, the dining and entertainment districts of Osaka, the mysterious Nachi Falls, and Himeji Castle, a World Heritage site!



## Restaurants

### INDIAN / TURKISH / ARABIAN / PAKISTANI / MULTINATIONAL

#### A ALI'S KITCHEN Shinsaibashi

B1F, 1-10-12, Shinsaibashi-suji, Chuo Ward, Osaka City, Osaka  
☎+81-6-4708-5745  
☑11:00-15:00, 17:00-23:00  
☑Open every day  
www.aliskitchen.jp



### JAPANESE

#### A Ukihashi Hotel Granvia Osaka

3-1-1, Umeda, Kita Ward, Osaka City, Osaka  
☎+81-6-6347-1447  
☑7:00-10:00, 11:00-15:00 (Sat., Sun. & Hol.: untill 15:30), 17:00-22:00  
\*Dinner: Sun., Mon. & Hol. 2days before reservation only  
☑Open every day  
www.hotelgranviaosaka.jp/dining/japanese-ukihashi.htm



\*The information is valid as of December 2016.

\*As information may change, please check to ensure the information you rely on is up to date.

### WESTERN

#### A French Restaurant Fleuve

Hotel Granvia Osaka, 3-1-1, Umeda, Kita Ward, Osaka City, Osaka  
☎+81-6-6347-1437  
☑7:00-9:00 (Sat., Sun. & Hol.: untill 9:30), 11:30-15:30, 17:00-22:00  
☑Open every day  
www.hotelgranviaosaka.jp/dining/french-restaurant-fleuve.htm



### JAPANESE

#### B THE U-don

Terminal 1 Bldg., 2F, Kansai International Airport  
☎+81-72-456-6515  
☑7:00-22:00  
☑Open every day  
https://tabelog.com/osaka/A2705/A270503/27013570/



Owner or chef is Muslim



Non-pork and non-pork related menu is available



Vegetarian or seafood menu is available.



No Alcohol Used.



Alcohol drinks are not served.



Space or items for prayer are available.

Tel.No.

☑ Open ☑ Closed

📍 Link to Google Maps

\*These are original icons for this guide. \*The information included in this guide is based on information supplied by each restaurant, hotel, shop and facility. For further details, please approach them directly. \*The services indicated by the icons may not always be available at all times. When planning to use those services, please make advance reservations and confirm whether that service is available.

### WESTERN

#### D Le Temps Hotel Granvia Kyoto

JR Kyoto Station, Karasuma Chuo-guchi, Shiokojisagaru, Karasuma-dori, Shimogyo Ward, Kyoto City, Kyoto  
☎+81-75-342-5525  
☑11:00-23:30 (L.O.)  
☑Open every day  
www.granviakyoto.com/dining/letemps.html



### JAPANESE

#### E YOSHINO

Hotel Nikko Nara, 8-1, Sanjo-hommachi, Nara City, Nara  
☎+81-742-35-8831  
☑11:30-14:30, 17:30-21:00  
☑Open every day  
www.okura-nikko.com/japan/nara/hotel-nikko-nara/



### JAPANESE

#### D KIYOMIZU JUNSEI OKABEYA

2, Kiyomizu, Higashiyama Ward, Kyoto City, Kyoto  
☎+81-75-541-7111  
☑10:30-17:00  
☑None scheduled  
www.okabeaya.com



### WESTERN

#### F Le BENKEI

276-1, Kitakoriyama-cho, Yamatokoriyama City, Nara  
☎+81-743-53-3588  
☑11:30-14:00 (L.O.), 17:00-21:00 (L.O.)  
☑Mon.  
www.benkei.ne.jp



### INDIAN

#### G MADRAS KITCHEN

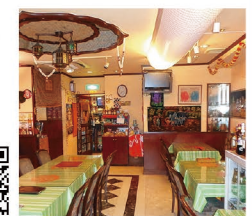
1F, 2-20-9, Nakayamate-dori, Chuo Ward, Kobe City, Hyogo  
☎+81-78-222-2502  
☑11:30-14:30, 17:30-22:00  
☑None scheduled  
http://madraskitchen.net



### INDIAN

#### G New Mehfil

K Bldg., 3F, 2-12-6, Kitanagasa-dori, Chuo Ward, Kobe City, Hyogo  
☎+81-78-321-7579  
☑Lunch: 11:00-15:00 (L.O.), Dinner: 17:00-22:00 (L.O.)  
☑Open every day  
http://mehfil.main.jp



### INDIAN / PAKISTANI

#### G Naan Inn

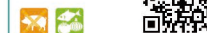
Taniguchi Bldg., 1F, 3-1-2, Yamamoto-dori, Chuo Ward, Kobe City, Hyogo  
☎+81-78-242-8771  
☑11:00-22:00  
☑Mon.  
https://tabelog.com/en/hyogo/A2801/A280101/28000464/



### CAFE

#### 1 TAMA MUSEUM KISHI STATION TAMA CAFE

803, Kodo, Kishigawa-cho, Kinokawa City, Wakayama  
☎+81-73-478-0110  
☑9:15-17:45 ☑3rd Wed.  
www.wakayama-dentetsu.co.jp/en/



DESIGNED BY EIJI MITOOKA + DON DESIGN ASSOCIATES

\*Please confirm holidays and business hours by contacting the respective restaurant, hotel, shop and facility yourself.

\*Advance reservation is recommended.



**A Hotel Kintetsu Universal City**

6-2-68, Shimaya, Konohana Ward,  
Osaka City, Osaka  
☎+81-6-6465-6000  
www.miyakohotels.ne.jp/  
hotel-kintetsu/english/

**A Sheraton Miyako Hotel Osaka**

6-1-55, Uehommachi,  
Tennoji Ward, Osaka City, Osaka  
☎+81-6-6773-1111  
www.miyakohotels.ne.jp/  
osaka/english/

**B Hotel Nikko Kansai Airport**

1, Senshu-kukou Kita, Izumi-Sano City,  
Osaka (Kansai International Airport)  
☎+81-72-455-1111  
www.hotelnikkokansaiairport.com

**D New Miyako Hotel**

17, Nishikujo-Inmachi,  
Minami Ward, Kyoto City, Kyoto  
☎+81-75-661-7111  
www.miyakohotels.ne.jp/  
newmiyako/english/

**E Hotel Nikko Nara**

8-1, Sanjo-hommachi,  
Nara City, Nara  
☎+81-742-35-8831  
www.okura-nikko.com/japan/  
nara/hotel-nikko-nara/

**A Osaka Marriott Miyako Hotel**

1-1-43, Abeno-suji,  
Abeno Ward, Osaka City, Osaka  
☎+81-6-6628-6111  
www.miyakohotels.ne.jp/  
osaka-m-miyako/english/

**A Tennoji Miyako Hotel**

1-2-8, Matsusaki-cho,  
Abeno Ward, Osaka City, Osaka  
☎+81-6-6628-3200  
www.miyakohotels.ne.jp/  
tennoji/english/

**D Hotel Granvia Kyoto**

JR Kyoto Station,  
Karasuma Chuo-guchi,  
Shiokojisagaru, Karasuma-dori,  
Shimogyo Ward, Kyoto City, Kyoto  
☎+81-75-344-8888  
www.granviakyo.com

**D KYOTO CENTURY HOTEL**

680 Higashishiokoji-cho,  
Shimogyo Ward, Kyoto City, Kyoto  
☎+81-75-351-0111  
www.keihanhotels-resorts.  
co.jp/kyoto-centuryhotel/  
english/

**D The Westin Miyako Kyoto**

1 Awataguchi Kacho-cho,  
Higashiyama Ward,  
Kyoto City, Kyoto  
☎+81-75-771-7111  
www.miyakohotels.ne.jp/  
westinmkyoto/english/

**H Miyako Hotel New Archaic**

2-7-1, Showa-dori,  
Amagasaki City, Hyogo  
☎+81-6-6488-7777  
www.miyakohotels.ne.jp/  
archaic/english/



Owner or chef  
is Muslim



Non-pork and non-pork  
related menu is available



Vegetarian or seafood  
menu is available



No Alcohol Used.



Alcohol drinks  
are not served.



Space or items for  
prayer are available.

Tel.No.

Open Closed

Link to Google Maps

\*These are original icons for this guide. \*The information included in this guide is based on information supplied by each restaurant, hotel, shop and facility. For further details, please approach them directly. \*The services indicated by the icons may not always be available at all times. When planning to use those services, please make advance reservations and confirm whether that service is available.

## Prayer room

**A NAMBA CITY**

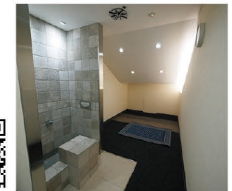
5-1-60, Namba, Chuo Ward,  
Osaka City, Osaka  
☎+81-6-6644-2960  
Shops: 10:00-21:00,  
Restaurants: 10:00-22:00  
None scheduled  
www.nambacity.com.  
e.uz.hp.transer.com

**B Kansai International Airport**

1, Senshu-kuko Kita,  
Izumisano City, Osaka  
☎+81-72-455-2500  
[Prayer room location]  
Terminal 1 Bldg.  
3F / International Gate Area North Wings (Near  
Gate 16) / International Gate Area South Wings  
(Near Gate 26)  
www.kansai-airport.or.jp/en/

**A OSAKA STATION CITY**

3-1-1, Umeda, Kita Ward,  
Osaka City, Osaka  
☎+81-6-6458-0212  
11:00-19:00  
(May-Aug.: until 20:00)  
Jan. 1  
http://osakastationcity.  
com/en/

**G KOBE-SANDA PREMIUM OUTLETS**

7-3, Kozudai, Kita Ward, Kobe City, Hyogo  
☎+81-78-983-3450  
10:00-20:00 \*Vary by season  
Once a year (3rd Thu. of February)  
[Prayer room location]  
Please contact  
the information center.  
www.premiumoutlets.  
co.jp/en/kobesanda/



## Mosques

**A Osaka Mosque**

4-12-16, Owada,  
Nishi Yodogawa Ward,  
Osaka City, Osaka  
☎+81-6-4862-6396  
http://osakamosque.  
info

**C Osaka Ibaraki Mosque**

4-6-13, Toyokawa,  
Ibaraki City, Osaka  
☎+81-72-643-7420  
www.  
osakamosque.org

**D Kyoto Mosque**

92, Miyagaki-cho,  
Kamigyo Ward,  
Kyoto City, Kyoto  
☎+81-75-231-3499  
www.  
islamjapan.net/ibc/

**G Kobe Muslim Mosque**

2-25-14, Nakayamate-dori,  
Chuo Ward,  
Kobe City, Hyogo  
☎+81-78-231-6060  
http://kobe-muslim-  
mosque.com



Voice  
of Muslim  
in Japan



## Spots to Visit in Kansai

**Shinsaibashi (Osaka)**

Shinsaibashi, a bustling street thronged with people, is the most popular tourist spot in Osaka. One of the highly recommended activities in Shinsaibashi is the Dotonbori River mini-cruise, which takes around 20 minutes. On a night river cruise, the neon lights reflected in the water are particularly beautiful. It's a must do activity!

**Kyoto**

Kyoto, with its beautiful shrines, Buddhist temples, and streets unchanged for centuries, is the place to experience the traditional Japan. The most popular tourist spots are the Kiyomizu-dera Temple, Kinkaku-ji Temple (the Golden Pavilion), and the Fushimi Inari Shrine. You can be photographed in Japanese dress, or if you are lucky, you might glimpse a beautifully costumed apprentice maiko!

Halal Shops  
in Kansai

The Osaka Mosque contains halal shops. So when you call in to pray, you can also do some shopping.



# Chugoku/Shikoku

Visit the Chugoku region's twin coasts and sample Shikoku's gourmet delights from the Seto Sea and Pacific Ocean!



- A Hiroshima
- B Onomichi
- C Tottori
- D Imabari
- E Niihama
- F Tokushima
- G Okayama
- H Hagi
- I Takamatsu



A Itsukushima-jinja Shrine, Hiroshima

## Restaurants

### INDIAN

#### A Indian Restaurant Kanak

Matsuoka Bldg., 1F,  
2-2-10, Otemachi,  
Naka Ward, Hiroshima City,  
Hiroshima  
☎ +81-82-236-7308  
☑ Lunch: 11:00-14:30 (L.O.),  
Dinner: 17:00-22:00 (L.O.)  
☑ None scheduled  
<http://kanak-hiroshima.com/en/>



### INDONESIAN

#### A WARUNG MATAHARI

5-8-13, Otemachi,  
Naka Ward,  
Hiroshima City, Hiroshima  
☎ +81-82-240-2082  
☑ 17:30-23:00  
☑ Mon.  
<http://warungmatahari.com>



### CAFE

#### B Hirayama Ikuo Museum of Art Tea Lounge Oases

200-2, Sawa, Setoda-cho,  
Onomichi City, Hiroshima  
☎ +81-845-27-3800  
☑ 9:00-17:00  
☑ Open every day  
<http://hirayama-museum.or.jp/en.html>



### JAPANESE

#### C Kaiyoutei

3-27-1, Karo-cho Nishi,  
Tottori City, Tottori  
☎ +81-857-31-4649  
☑ 11:00-15:00, 17:00-22:00  
☑ Open every day  
<http://ginrin-grp.com/ginrin/kaiyoutei/>



..... Owner or chef is Muslim



..... Non-pork and non-pork related menu is available



..... Vegetarian or seafood menu is available.



..... No Alcohol Used.



..... Alcohol drinks are not served.



..... Space or items for prayer are available.

☎ Tel.No.

☑ Open ☑ Closed

📍 Link to Google Maps

\*These are original icons for this guide. \*The information included in this guide is based on information supplied by each restaurant, hotel, shop and facility. For further details, please approach them directly. \*The services indicated by the icons may not always be available at all times. When planning to use those services, please make advance reservations and confirm whether that service is available.

## Hotels

### D Hotel Ajour Shionomaru

30, Yunoura,  
Imabari City, Ehime  
☎ +81-898-47-0707  
[www.hotel-ajour.jp](http://www.hotel-ajour.jp)



## Prayer room

### H KUMAYA ART MUSEUM

47-1, Imauonotanamachi,  
Hagi City, Yamaguchi  
☎ +81-838-25-5535  
☑ 9:00-16:00 ☑ Mon., Wed. & Fri.  
[www.hagishi.com/search/detail.php?d=100060](http://www.hagishi.com/search/detail.php?d=100060)



## Mosques

### A Higashi Hiroshima Mosque

2786-1, Taguchi, Saijo-cho,  
Higashihiroshima City, Hiroshima



### E Niihama Mosque

2-2-43, Ikkucho, Niihama City, Ehime  
☎ +81-897-34-9191



### G Okayama Mosque

2-1-7, Tsushima Higashi,  
Kita Ward, Okayama City, Okayama



Voice of Muslim in Japan

## Japanese gift recommendations

### Magnets

Magnets inspired by Japanese cultural icons are very popular and make good souvenirs! Give them to family and friends!



### Key chain

Pop culture characters and sushi-shaped key chain are sold in large numbers and make ideal souvenirs!



### T-shirts

T-shirts depicting Japanese tourist spots and maps or featuring Japanese writing are also popular.



### Food

Japanese tea, seasonings for sprinkling over rice, nori seaweed, sweet snacks, rehydratable noodles and other foods unique to Japan make good souvenirs. Matcha green tea-flavoured sweets, which are only available in Japan, are also very popular.



### ¥100 Shops

¥100 Shops are found all over Japan and sell many quality, convenient products. The range of items is something to see!

### Hijab

Other souvenir choices are Hijab dyed in the traditional Kyoto way and Hijab made from exquisite 100% silk Yokohama scarves.





# Kyushu/Okinawa

Kyushu and Okinawa in the southwest.  
Soak up the charm and unique flavors  
of Japan's southern climes!



- A Fukuoka
- B Nagasaki
- C Sasebo
- D Kumamoto
- E Hitoyoshi
- F Okinawa
- G Beppu
- H Takachiho

Huis Ten Bosch,  
Nagasaki  
©HUIS TEN BOSCH/J-15938

H Takachiho,  
Miyazaki

F Kerama-jima Islands,  
Okinawa

## Restaurants

### INDIAN / OTHERS

#### A Halal Food Plaza Nabi san

1-27-3, Motohama, Nishi Ward,  
Fukuoka City, Fukuoka  
☎+81-90-4484-4020  
☎10:00-20:00 ☎Sun.  
https://tabelog.com/fukuoka/  
A4001/A400203/40043263/



### MALAYSIAN

#### B MALAYA

Asahisangyo Kotsu Bldg., 1F, 4-4,  
Kozenmachi, Nagasaki City, Nagasaki  
☎+81-95-826-6933  
☎Lunch: 11:30-15:00,  
Dinner: 17:30-22:00  
☎Sun.



### INDIAN

#### C SONA

6-23, Kamikyomachi,  
Sasebo City, Nagasaki  
☎+81-956-23-6886 ☎11:00-22:00  
☎Open every day  
http://r.gnavi.co.jp/  
mkwhe20c0000/



### INDIAN

#### B bishnu

Mirai Nagasaki Cocowalk 4F, 1-55,  
Morimachi, Nagasaki City, Nagasaki  
☎+81-95-801-8738 ☎11:00-23:00  
☎Open every day  
http://bishnu-group.net/70162/



### INDIAN

#### B MILAN

1F, 1-15, Kabashimamachi,  
Nagasaki City, Nagasaki  
☎+81-95-820-8189 ☎10:00-22:00  
☎Open every day  
http://r.gnavi.co.jp/  
13bbcv070000/



### TURKISH

#### F Turkish Restaurant Kelebek

Southern Wind Miyazato 101, 558-2, Onaga,  
Nishihara Town, Nakagami-gun, Okinawa  
☎+81-98-944-4747  
☎11:30-14:30 (L.O.),  
18:00-22:00 (L.O.)  
☎Wed.  
http://r.gnavi.  
co.jp/f260500/



Owner or chef  
is Muslim



Non-pork and non-pork  
related menu is available



Vegetarian or seafood  
menu is available.



No Alcohol Used.



Alcohol drinks  
are not served.



Space or items for  
prayer are available.

Tel.No.

Open Closed

Link to Google Maps

\*These are original icons for this guide. \*The information included in this guide is based on information supplied by each restaurant, hotel, shop and facility. For further details, please approach them directly. \*The services indicated by the icons may not always be available at all times. When planning to use those services, please make advance reservations and confirm whether that service is available.

## Hotels

### C HUIS TEN BOSCH

<Hotel Europe, Hotel Amsterdam, Hotel ForestVilla>

Huis Ten Bosch h-machi, Sasebo City, Nagasaki  
☎+81-956-27-0001  
http://english.huistenbosch.co.jp



©HUIS TEN BOSCH/J-15938

### E HITOYOSHI RYOKAN

160, Kamiaomachi,  
Hitoyoshi City, Kumamoto  
☎+81-966-22-3141  
www.hitoyoshi-ryokan.com



### F HOTEL JALCITY NAHA

1-3-70, Makishi,  
Naha City, Okinawa  
☎+81-98-866-2580  
www.naha.jalcity.co.jp/en/



### D Hotel Nikko Kumamoto

2-1, Kamitori-cho, Chuo Ward,  
Kumamoto City, Kumamoto  
☎+81-96-211-1111  
www.nikko-kumamoto.co.jp/en/



### F HOTEL YUGAF INN OKINAWA

453-1, Miyazato,  
Nago City, Okinawa  
☎+81-980-53-0031  
www.yugaf.com



## Mosques

### A Fukuoka Mosque

3-2-18, Hakozaki,  
Higashi Ward,  
Fukuoka City, Fukuoka  
☎+81-92-641-7022  
www.fukuokamasjid.org



### D Kumamoto Masjid

5-5-2, Kurokami,  
Chuo Ward,  
Kumamoto City, Kumamoto  
☎+81-96-273-6561  
www.kicjapan.com



### G Beppu Mosque

10-19, Wakakusa-cho,  
Beppu City, Oita  
www.facebook.com/  
friendsofmosquebeppu



\*The information is valid as of December 2016.

\*As information may change, please check to ensure the information you rely on is up to date.

\*Please confirm holidays and business hours by contacting the respective restaurant, hotel, shop and facility yourself.

\*Advance reservation is recommended.



# Basic Information

Information for a smooth, pleasant trip to Japan



## The weather according to the season

**SPRING (March-May)** Beautiful cherry blossoms bloom throughout Japan from the end of March through early April.

**SUMMER (June-August)** July and August form the true leisure season in Japan. Throughout the country, there are countless festivals and events.

**AUTUMN (September-November)** Autumn is a very comfortable season in Japan, with cool temperatures and little humidity. The trees covering the mountains are ablaze with beautiful colours.

**WINTER (December-February)** In central and northern Japan, the ground is often covered in snow for much of the winter.

## Average Temperature in Major Japanese Cities

Month	January		February		March		April	
City	Max	Min	Max	Min	Max	Min	Max	Min
Sapporo	-2	-8	-0.9	-7.8	3.4	-3.5	9.8	3.2
Sendai	4.2	-2.7	5	-2.2	11	1.2	14.9	5.9
Tokyo	9.6	1.8	10.3	2.7	16.4	7.9	19.2	10.8
Nagoya	9	0	9.1	0.9	16.5	5.2	19.6	8.6
Osaka	9	1.7	9.3	2.5	15.9	6	19	9.8
Fukuoka	9.8	2.9	11.6	4.5	17.4	7.9	19.2	10.7
Naha	19.7	14.3	21.4	16.2	23.2	18	23.3	18.1

Month	May		June		July		August	
City	Max	Min	Max	Min	Max	Min	Max	Min
Sapporo	15.7	7.9	23	13.9	27.1	19.1	27.1	20.3
Sendai	19.7	10.5	23.1	16.3	25.6	20	30	22.4
Tokyo	24.1	16	26.5	20	31.4	24.2	33.2	26
Nagoya	25.5	10.5	28.4	20.3	33	24.3	34.5	25.2
Osaka	25.2	10.5	28.9	21	32.9	25.3	34.8	26.6
Fukuoka	25.3	10.5	27.1	21	34	26.9	34.5	26.7
Naha	26.3	10.5	30.6	26.2	32.9	27.4	32.9	27.5

Month	September		October		November		December	
City	Max	Min	Max	Min	Max	Min	Max	Min
Sapporo	22.9	15	16.8	8.9	10.1	2.6	3.2	-1.6
Sendai	25.7	18.2	20.3	13.7	14.1	5.1	8.3	1.5
Tokyo	28.8	21.8	23	17	17.4	9.8	12.1	4.9
Nagoya	29.9	21	24.5	16.7	16.1	7.2	10.9	2.8
Osaka	30	21.4	24.6	17.8	17	9.2	11	4.8
Fukuoka	29.5	21.8	24.7	17.4	17.1	10.2	11.4	5.3
Naha	31.1	26	27.7	23.5	23.8	19.1	19.6	15

Temps. are in °C



## Currency

The unit of Japanese currency is yen. Coins are available in denominations of 1, 5, 10, 50, 100 and 500 yen and bank notes in denominations of 1,000, 2,000, 5,000 and 10,000 yen.

You can buy yen at foreign exchange banks and other authorized money exchangers. At the international airports, currency exchange counters are usually open during normal office hours. The exchange rate fluctuates daily depending on the money market.

Here are the details →

<http://www.jnto.go.jp/eng/basic-info/basic-info/money.html>



## ATMs

ATM's are located in post offices, Japan Post Bank offices, etc. You can withdraw cash using credit cards issued by overseas financial institutions.

●Sign posted at Japan Post Bank's ATM corner

●Overseas-issued credit cards that are accepted by Japan Post Bank's ATM's

●Seven-Eleven stores and ATM's

●Locations of ATM's for credit card use

Find out more → <http://www.jnto.go.jp/eng/pdf/tips/ukeire.pdf>

\*The information is valid as of December 2016. As information can change, please check to ensure the information you rely on is up to date.

\*Please use the JNTO Tourist Information Center (TIC), which can suggest you places to visit, provide information, and supply foreign-language tourist information brochures and maps free of charge. For details, go to <http://www.jnto.go.jp/eng/arrange/travel/guide/tic.html>

\*For tourist information in all areas, please use JNTO-authorized tourist information centers and offices for overseas visitors in 365 locations nationwide. For details, go to <http://www.jnto.go.jp/eng/arrange/travel/guide/voffice.php>



## Time Difference

The time difference between Japan and Malaysia/Singapore is just one hour. If it is 9:00 a.m. in Malaysia, it is 10:00 a.m. in Japan.



## Voltage and Power Plugs

Japanese power outlets are two-pin, A-type with a voltage of 100V. Please note that a power plug adaptor (or transformer) is needed to use electrical devices brought from Malaysia or Singapore.



## Emergency Contacts

Police (phone number):110

Fire department / ambulance (phone number):119



## Embassies of Malaysia and Singapore in Japan

### Embassy of Malaysia

20-16, Nanpeidai-cho, Shibuya City, Tokyo.

TEL. +81-3-3476-3840

[http://www.kln.gov.my/web/jpn\\_tokyo/home](http://www.kln.gov.my/web/jpn_tokyo/home)

### Embassy of Singapore

5-12-3, Roppongi, Minato City, Tokyo

TEL. +81-3-3586-9111/2

<https://www.mfa.gov.sg/content/mfa/overseasmission/tokyo.html>



## No visa needed for Japan for Malaysian nationals

The visa waiver scheme for Malaysians applies only to holders of passports equipped with an ICAO-standard electronic chip. Those whose passports do not feature an electronic chip are advised to obtain a visa before leaving. Latest visa information :

[http://www.mofa.go.jp/j\\_info/visit/visa/](http://www.mofa.go.jp/j_info/visit/visa/)



## Free Wi-Fi Spots

Free public wireless LAN is increasing in airports, train stations, and bus facilities as well as in eating and drinking establishments and accommodation facilities.

There is also an app that enables you to use free public wireless LAN after you have registered.

Here are the details →

<http://www.ntt-bp.net/jcfw/en.html>



## Tax-Free Shopping Information

Enjoy tax-free shopping in Japan.

More products have been added to tax-free items such as sweets or snacks and cosmetics at participating stores. Visitors with a temporary stay status are eligible for tax-free shopping. Show your passport at the check-out counter, and sign a proof-of-purchase document.

Find out more →

<http://tax-freeshop.jnto.go.jp/eng/index.php>

# ムスリムとのコミュニケーションシート

Sheet for communication between Muslim visitors and Japanese

## ホテル・レストラン接客係の皆さま

このシートはイスラム教徒(ムスリム)のお客様が食事など宗教上のご希望を伝えるために記入するものです。チェックがついている条件の中で、対応できる事柄があればお客様にご提供をお願い致します。

To hotel and restaurant staff

This sheet is for Muslim visitors to use when indicating their preferences (religious requirements) when ordering food or drink. If the customer has marked any of the conditions with a tick, please serve the customer accordingly.

## 食事編 For restaurants



この店には、「ノンポーク」メニュー\*はありますか?



※豚肉およびベーコン、ソーセージ、ラード、ゼラチン、ショートニング、乳化剤など一切の豚由来成分、アルコールおよびアルコール由来成分を一切使わない料理。

Does this restaurant have a non-pork menu\*?

\*Food containing absolutely non-pork, bacon, or other pork-derived ingredients, including sausages, lard, gelatin, shortening, or emulsifier, and non-alcohol or alcohol-derived ingredients.

☐ はい (Yes)

☐ いいえ (No)



この店は、ベジタリアン向けの料理もしくはシーフード料理を提供できますか?

Can this restaurant provide vegetarian or seafood dishes?

☐ はい (Yes)

☐ いいえ (No)



この店は、お酒やみりんを使わない料理を提供できますか?

Can this restaurant provide dishes that are free from alcohol or mirin?

☐ はい (Yes)

☐ いいえ (No)



この店は、お醤油を使わない料理を提供できますか?  
(アルコールが添加されたものでなく、自然発酵ならOKです)



Can this restaurant offer shoyu-free dishes?  
(Naturally fermented shoyu to which no added alcohol is acceptable.)

☐ はい (Yes)

☐ いいえ (No)



この店はイスラム教徒向けメニューと他の料理が混ざらないように、材料の保存場所、調理器具、食器などを分けていますか?

Does this restaurant store ingredients separately so that food for Muslims is not mixed with food for others? And are cooking and eating utensils kept separately?

☐ はい (Yes)

☐ いいえ (No)



この店では使い捨ての食器、箸を使わせていただけますか?

Does this restaurant provide disposable plates and chopsticks?

☐ はい (Yes)

☐ いいえ (No)



このお店の中では、他のお客様にアルコール飲料が提供されますか?

Are alcoholic drinks served to other customers in this restaurant?

☐ はい (Yes)

☐ いいえ (No)

## ホテル・施設編 For hotels and facilities



部屋のアルコール類を撤去していただくことはできますか?

Can you ensure rooms are free of alcoholic drinks?

☐ はい (Yes)

☐ いいえ (No)



礼拝に使えるスペースはありますか?

Do you have a space that can be used for prayer?

☐ はい (Yes)

☐ いいえ (No)



礼拝に必要なアイテム\*を貸していただけますか?

※コーラン、礼拝用のマット、メッカの方角を示すコンパス、女性の礼拝用衣服

Do you lend items\* necessary for prayer?

\*Copies of the Koran, prayer mats, compasses to show the direction of Mecca, clothing for women to pray in

☐ はい (Yes)

☐ いいえ (No)



近くにモスクがあったら行き方を教えてください。

If there is a mosque nearby, please tell me how to get there.



はい、あるのでお教えします。  
(Yes, there is a mosque nearby and we can tell you how to find it.)



いいえ、近くにはありません。  
(No, there is no mosque in the vicinity.)



この商品には豚肉およびベーコン、ソーセージ、ラード、ゼラチン、ショートニング、乳化剤など豚由来の原材料が入っていますか?

Does this product contain any pork or any other pork-derived items, including bacon, sausages, lard, gelatin, shortening, or emulsifier?

☐ はい (Yes)

☐ いいえ (No)